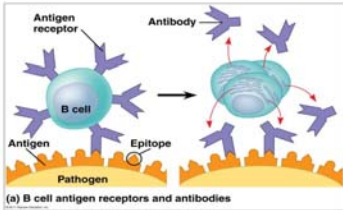


Antigens = proteins that are found on the surface of the pathogen. Antigens are unique to that pathogen.

Pathogen = foreign organism; microorganism *epitope*



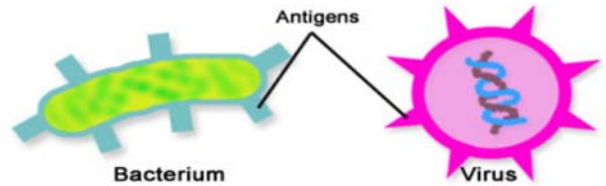
When an antigen enters the body, the immune system produces antibodies against it.

Types of Pathogens:

Bacteria

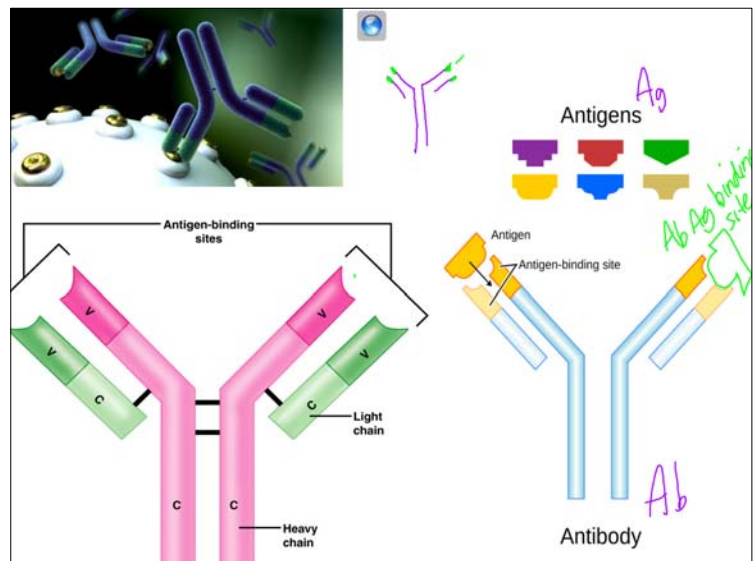
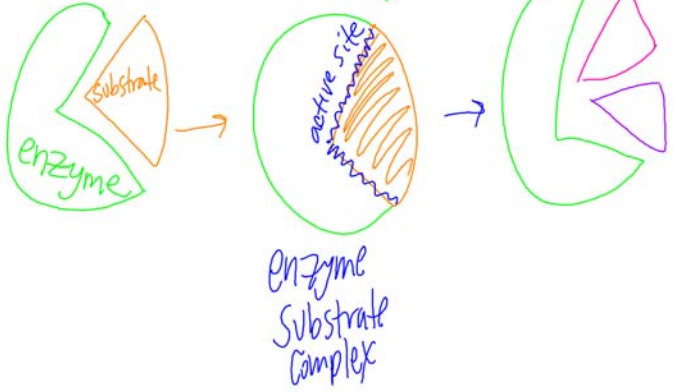
Virus

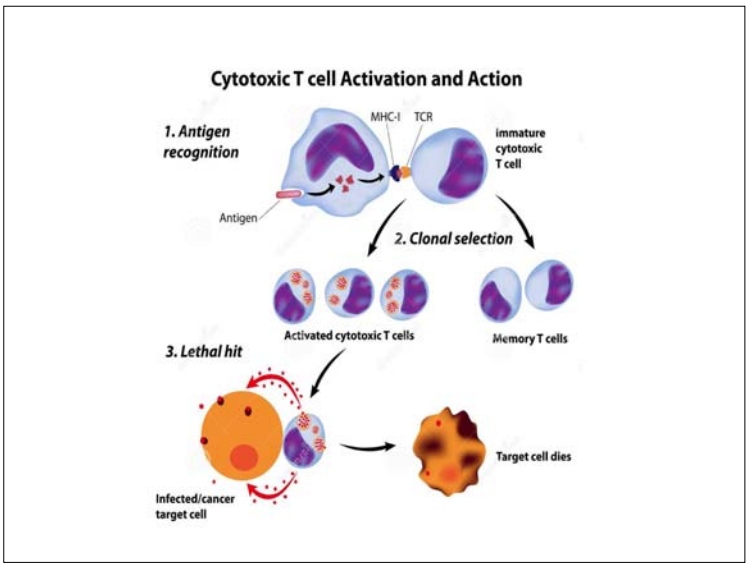
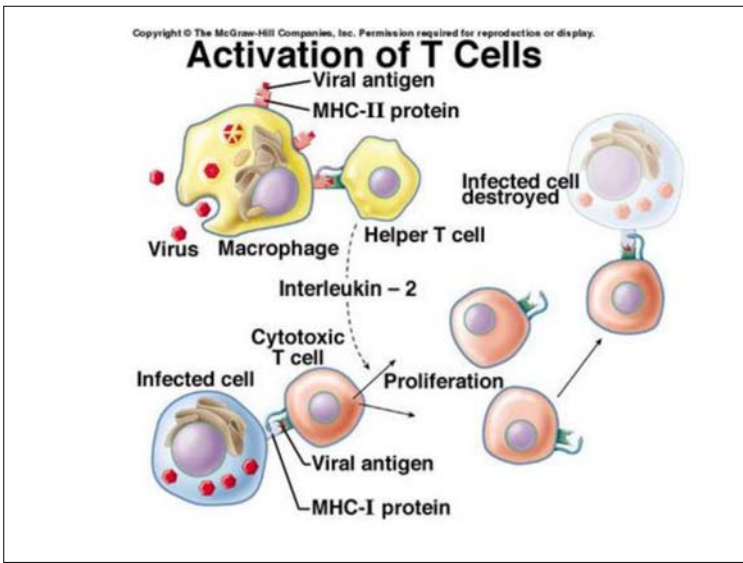
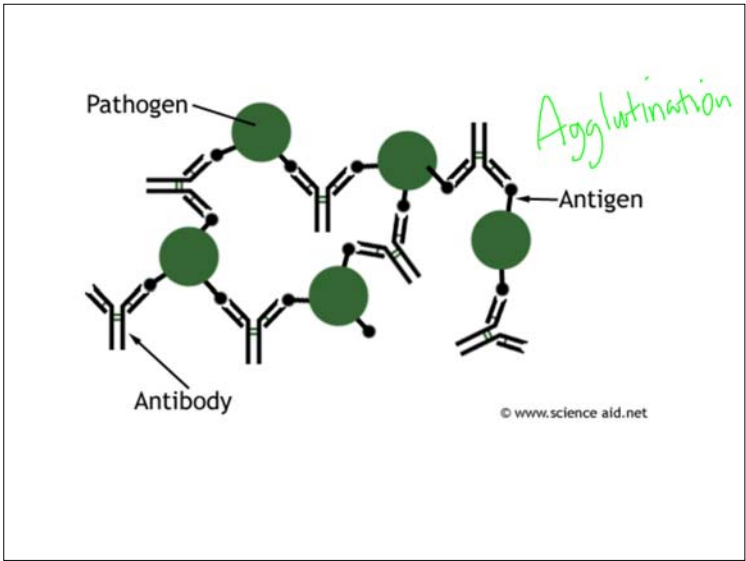
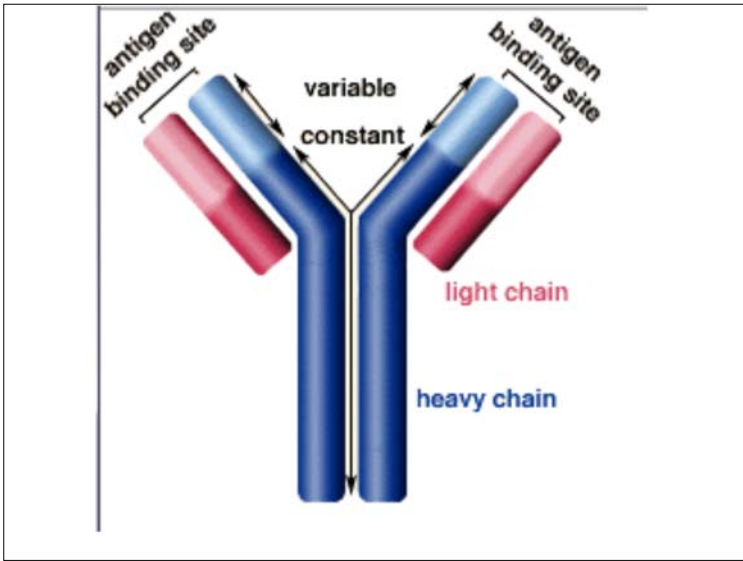
Fungi

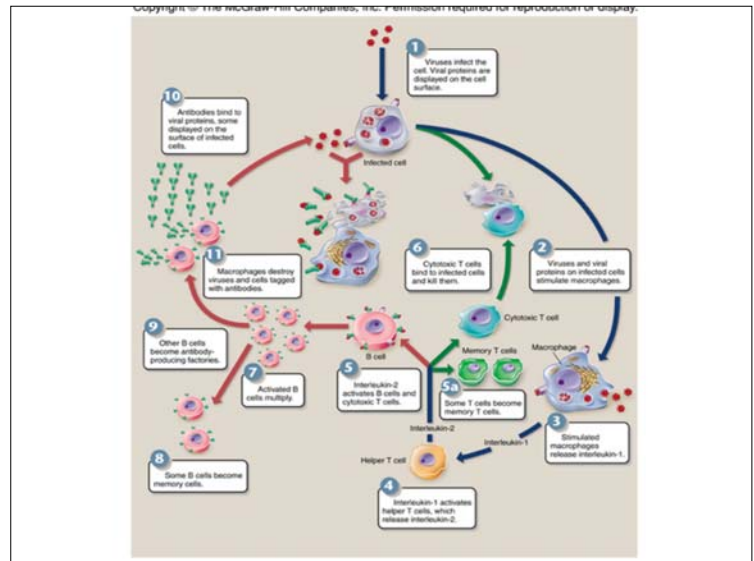
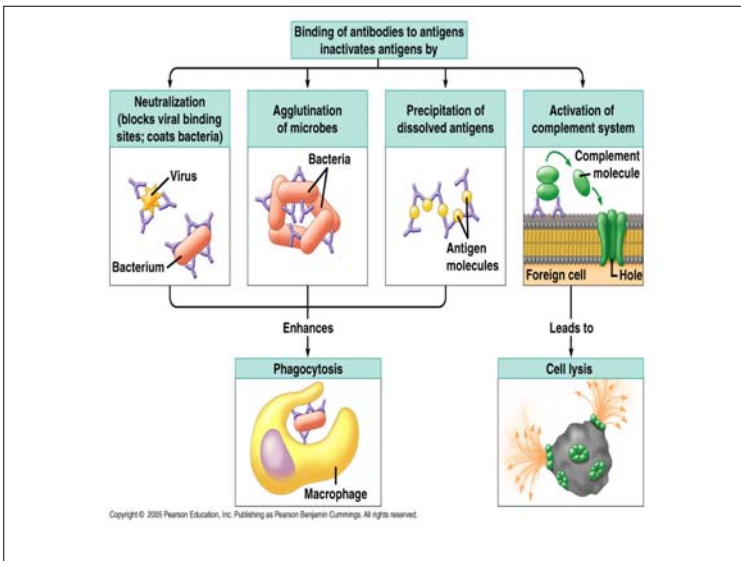
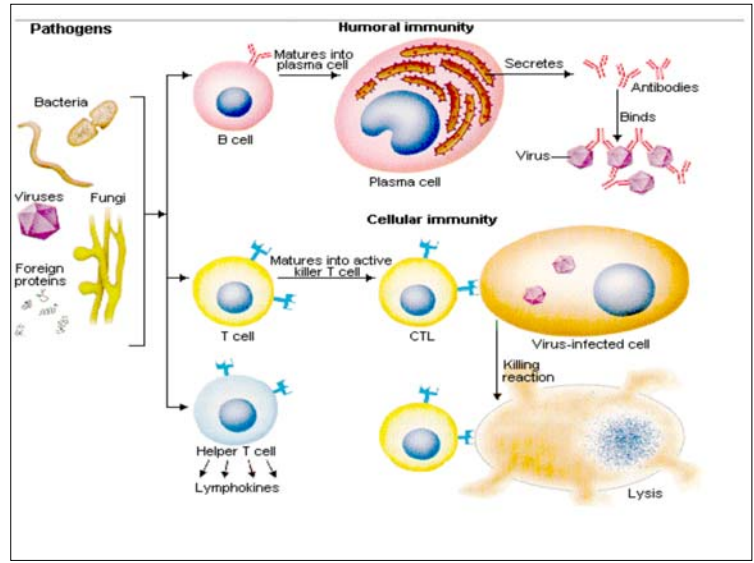
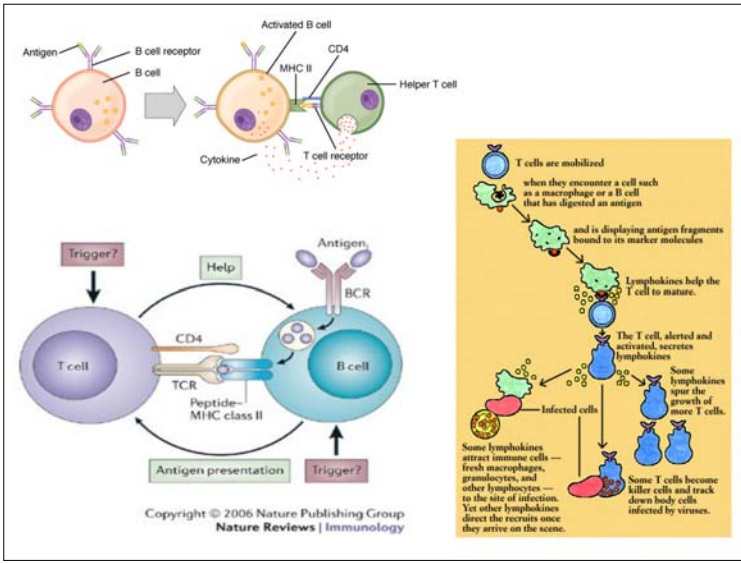


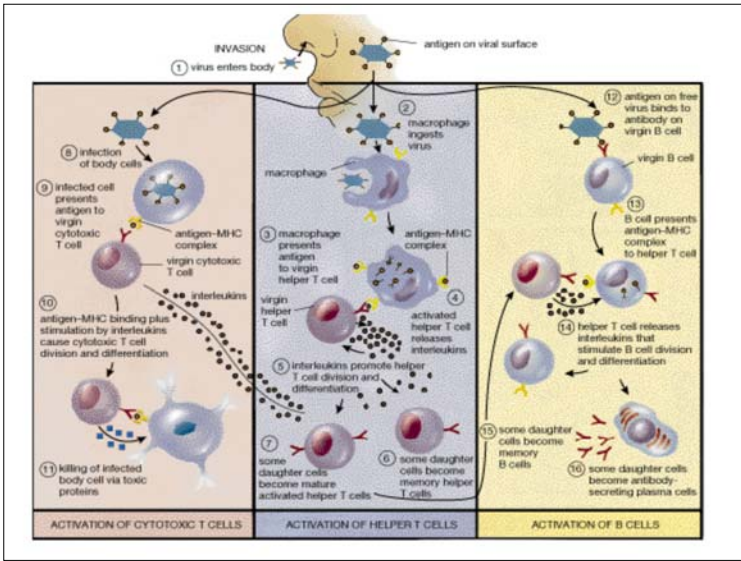
Enzyme Model:

"Lock & Key"









ELISA:

Enzyme-Linked Immunosorbent Assay Test

E.L.I.S.A.
L. Borges, M. Solís, I. Valdez.

